

**Janitorial Service  
Sink Faucets**

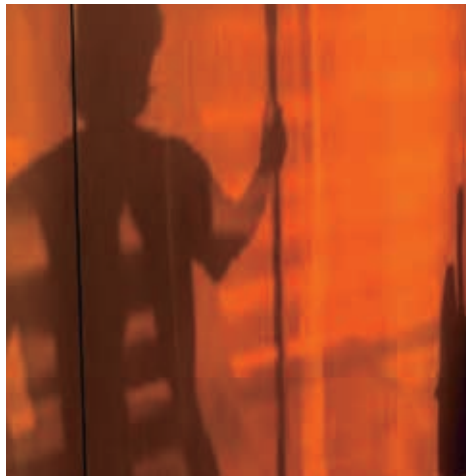
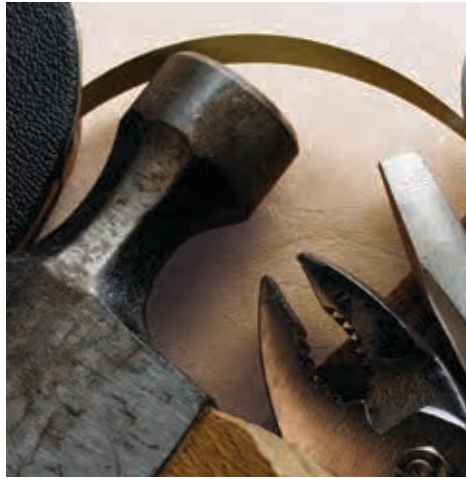
## Janitorial Solutions

Faucets in janitorial and maintenance sink locations are subjected to more abuse than any other faucet in your facility. Their exposure to chemicals and other contaminants can also create a significant back-flow hazard to the potable water in your building.

Choosing the right faucets for janitorial sink locations is extremely important – there isn't a better choice than Chicago Faucets. Our janitorial sink faucets are engineered for high-use, high-abuse commercial applications and feature:

- Heavy-duty, solid cast brass construction for unsurpassed durability
- A choice of atmospheric and continuous pressure spill resistant vacuum breaker spouts to cover all janitorial sink applications
- Vacuum breakers integrated into the spout to help reduce back-flow risk
- Top-mounted wall bracket provides extra stability and doesn't interfere with filling floor-standing buckets
- Renewable Quatum™ operating cartridges for dependable operation and easy maintenance
- Integrated pail hook and hose threaded outlet for added convenience

Janitorial sink areas provide essential services to buildings each and every day. Chicago Faucets offers products that are up for the challenge with built-in safety features and comprehensive code compliance to help protect your potable water supply.



# Choosing The Right Faucet For Janitorial And Maintenance Sinks Is Important

Choosing the right faucet for your janitorial or maintenance sink can help reduce the risk of backflow and contaminant exposure to your potable water supply. Something as simple as a hose attached to a faucet and submerged in a bucket full of detergent can be a potential risk. Choosing the right faucet can help reduce this risk.

## **Determine if the faucet will be installed on a non-pressurized or a continuous pressure line.**

An example of a **non-pressurized** line is a hose attached to the end of a service sink faucet. It is a line without shut-offs downstream. The outlet of the faucet is never connected to another device or system that can produce back pressure.

A **continuous pressure** line is where pressure is continuously applied to a backflow preventer for extended periods of time – from a hot water space-heating boiler, an automatic dilution dispensing system, or a system that incorporates a shut-off downstream.

## Chicago Faucets Offers Two Spouts To Help Reduce The Risk Of Backflow

### **Atmospheric Vacuum Breaker Spout**

Our atmospheric vacuum breaker spout is designed for use on non-pressurized systems. When installed properly, it can provide excellent protection against back siphonage.

The spout incorporates a vacuum breaker that is closed by the ambient air pressure when the water flow is off. It helps prevent back-siphonage from a non-pressurized source – like a hose submerged in a bucket of contaminated water.

### **Spill Resistant Vacuum Breaker Spout**

Our spill resistant vacuum breaker spout is designed for use on continuous pressure lines and is recommended for any application with system connections or shut-offs downstream.

The spout incorporates a vacuum breaker with a spring-loaded poppet that helps prevent contaminated water from entering the water supply. The vacuum breaker must be installed vertically. Pressure must not exceed 150 psi.



Service sink faucet with atmospheric vacuum breaker spout, model 445-VBRRCF



Service sink faucet with continuous pressure vacuum breaker spout, model 445-PVBCP



897-RCF

## Models 897-CP and 897-RCF

### With integral service stops

- Atmospheric vacuum breaker spout
- Adjustable 7-5/8" – 8-3/8" Centers
- Available in rough or polished chrome plated finishes
- Quatern™ quarter-turn renewable compression cartridges
- Not intended for continuous pressure systems



897-CCP

## Models 897-C and 897-CRCF

### With integral service stops and check valves

- Atmospheric vacuum breaker spout
- Adjustable 7-5/8" – 8-3/8" centers
- Available in rough or polished chrome plated finishes
- Quatern™ quarter-turn renewable compression cartridges
- Not intended for continuous pressure systems



## Model 445-VBRRCF

### With integral service stops

- Atmospheric vacuum breaker spout
- Adjustable 3" – 8-3/8" Centers
- Available in rough chrome plated finish
- Quatern™ compression operating cartridges
- 2-1/2" offset adjustable supply arms
- Not intended for continuous pressure systems



## Model 445-PVBCP

### Spill resistant vacuum breaker spout, integral service stops and check valves

- Adjustable 3" – 8-3/8" centers
- Riser pipe brace
- Available in polished chrome plated finish
- Quatern™ compression operating cartridges
- 2-1/2" offset adjustable supply arms
- Intended for continuous pressure systems

# Faucet Comparison Guide

Use this comparison chart to help in your selection of the best Chicago Faucets janitorial service faucet for your project.



Product Feature	445-PVBCP	445-VBRRCF	897-CCP	897-RCF
Spill resistant vacuum breaker (ASSE 1056)	■			
For use in pressurized systems	■			
One-piece spout, integrated atmospheric vacuum breaker (ASSE 1001)		■	■	■
7-5/8" to 8-3/8" adjustable centers			■	■
3" to 8-3/8" adjustable centers	■	■		
2-1/2" offset adjustable supply arms with wall flange	■	■		
Wall brace	■	■	■	■
Pail hook	■	■	■	■
2-3/8" lever handles with secure red and blue index buttons	■	■	■	■
Quatern™ compression operating cartridge	■	■	■	■
3/4" male hose thread outlet	■	■	■	■
<b>CFNow!</b> ™		■		■
Solid brass body construction	■	■	■	■
Buy American Act compliant	■	■		
Integral service stops	■	■	■	■
Integral check valves	■		■	
Pipe support	■			
ASME A112.18.1	■	■	■	■
CSA B125.1	■	■	■	■
Limited lifetime faucet warranty	■	■	■	■
5 Year limited cartridge warranty	■	■	■	■
1 Year limited finish warranty	■	■	■	■

*Consult local codes and authorities.*

## When You Need Your Faucets Fast

Products designated **CFNow!**™ are available for shipment within 24 hours of your order. From 5-day standard shipping on most catalog items, to having your product shipped within 24 hours of placing your order, you can count on getting the industry's best products faster than ever before.



## Over 1,800 Buy American Act Compliant Products

The American Recovery and Reinvestment Act ("stimulus package") signed into law in 2009, included a Buy American provision favoring domestic sources. Selecting products that meet the requirements of this Act can help support jobs across the USA and assist in our economic recovery. We are proud that over 95% of Chicago Faucets products meet these requirements.





We are a member of the U.S. Green Building Council and support the Leadership in Energy and Environmental Design (LEED) Green Building Rating System™, to measure the efficiency and sustainability of buildings in the U.S. and Canada. If you are trying to achieve LEED Certification for your building, our low-flow outlets, metering cartridges, and sensor-operated faucets can contribute points in these areas: Water Efficiency Credit 2: Innovative Wastewater Technologies and Water Efficiency Credit 3: Water Use Reduction.



We are proud to be a partner with WaterSense®, sponsored by the EPA and designed to protect the future of our nation's water supply by promoting efficiency and enhancing the market for water efficient products, programs, and practices.



We are a charter sponsor of the Alliance for Water Efficiency, a non-profit organization that is dedicated to the efficient and sustainable use of water. It brings together a diverse range of stakeholders to advocate water efficiency and conservation.



a Geberit company



Chicago Faucets, a member of the Geberit Group, is the leading brand of commercial faucets and fittings in the United States, offering a complete range of products for schools, laboratories, hospitals, office buildings, food service, airports, and sports facilities. Whatever your requirements may be, Chicago Faucets offers standard and made-to-order products that are designed to meet any commercial application.

The Chicago Faucet Company  
 2100 South Clearwater Drive  
 Des Plaines, IL 60018  
 Phone: 847/803-5000  
 Fax: 847/803-5454  
 Technical: 800/832-8783  
[www.chicagofaucets.com](http://www.chicagofaucets.com)